

Information

Lead / Host

Roman Guggenberger, PD Dr.

Senior Staff, Head musculoskeletal imaging, Department of Diagnostic and Interventional Radiology, USZ

Jürg Hodler, Prof. Dr.

Institute Director, Department of Diagnostic and Interventional Radiology, USZ

Speakers

Xavier Tomàs Batlle, Dr.

Staff Consultant, Section for Musculoskeletal Radiology, Hospital Universitari Barçelona

Andreas Boss, Prof. Dr. Dr.

Senior staff, Department of Diagnostic and Interventional Radiology, USZ

Irene Burger, PD Dr.

Head Nuclear Medicine, County Hospital of Basel (KSB)

Krishna Chaitanya, Dr.

Fellow, Institute of Biomedical Imaging, ETH Zurich

Christian Kellenberger, Prof. Dr.

Head Institute, Pediatric Radiology, Children Hospital University of Zurich

Jürgen Machann, PD Dr. sc. hum.

Metabolic Imaging, Institute for Diabetes Research and Metabolic Diseases, Diagnostic and Interventional Radiology, University Tübingen

Christina Messiou, Prof. Dr.

The Institute of Cancer Research, The Royal Marsden NHS Foundation, London

Cristina Rossi, PD Dr.

MR Physicist, Department of Diagnostic and Interventional Radiology, USZ

Andrea Roskopf, PD Dr.

Senior Staff, Radiology, Balgrist Orthopedic University Hospital, Zurich

Jochen von Spiczak, Dr.

Junior Staff, Department of Diagnostic and Interventional Radiology, USZ

Moritz Wurnig, Dr.

Junior Staff, Department of Diagnostic and Interventional Radiology, USZ

Venue

University Hospital Zurich
Department of Diagnostic and Interventional Radiology

Lecture Hall «Aula»

Center for Continuing Education
University of Zurich (Zentrum für Weiterbildung Universität Zürich)
Schaffhauserstrasse 228
8057 Zurich
Tramlines 10, 14 to Hirschwiesen

Organization / Contact

Simone Passerini
+41 44 255 98 97
simone.passerini@usz.ch

Costs

CHF 250.– incl. documents and catering
Member of SSSR and ESSR CHF 200.–
(11th SSSR educational meeting)

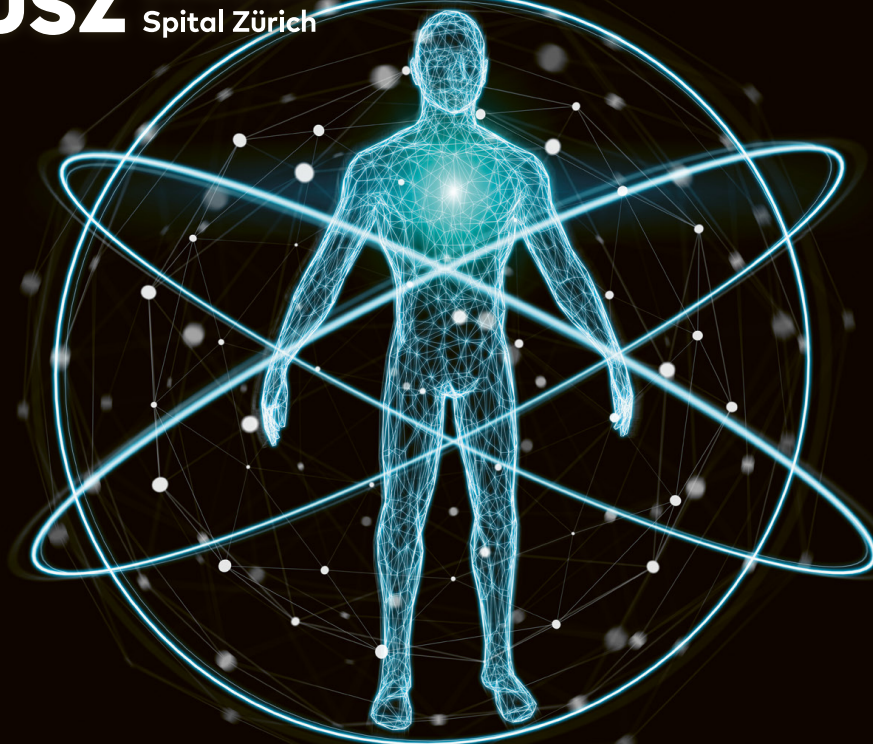
Registration

Your registration will be valid after online payment. Please use this link:
www.usz.ch/whole-body-mri
Registration deadline: 23rd January 2020
Maximum number of participants: 90

Credits

SGR-SSR 6 Points (SSSR, ESSR, DRG and ÖRG accredited)
SGAIM 6 Points
SGN 1 Point

USZ Universitäts
Spital Zürich



Department of Diagnostic and Interventional Radiology

Whole-Body MRI: Impact On Modern Patient Care

Saturday, February 1st, 2020
Center for Continuing Education University of Zurich
(Zentrum für Weiterbildung der Universität Zürich)

In collaboration with
Swiss Society of Skeletal Radiology
European Society of Musculoskeletal Radiology
University of Zurich



Welcome

Dear colleagues

Whole-Body MR Imaging (wbMRI) has gained increasing interest in recent years, already finding its way into clinical practice in many institutions. We will address this evolution in a state-of-the-art symposium, where wbMRI will be discussed in its various forms and applications as well as its impact on patient care.

The presented topics include aspects of image acquisition, artificial intelligence approaches for whole-body composition profiling and clinical aspects from oncologic applications to inflammatory disease.

We have been able to attract a distinguished faculty from different fields of wbMRI from Switzerland and from a number of European countries. As the symposium is organized in collaboration with the Swiss Society of Skeletal Radiology (SSSR) a focus will be on wbMRI and musculoskeletal applications. However, implications of wbMRI on a broader spectrum of clinical subdisciplines will also be discussed including general and internal medicine, endocrinology, pediatrics, urology, rheumatology, angiology and neurology.

We hope you will find this symposium interesting and look forward to seeing you in Zurich in 2020.

With best regards,

Roman Guggenberger, PD Dr.
Head, Musculoskeletal Imaging,
Department of Diagnostic and Interventional Radiology,
University Hospital Zurich

Jürg Hodler, Prof. Dr.
Director, Department of Diagnostic and Interventional Radiology,
University Hospital Zurich

Program

08.30 h Reception and Registration – Guggenberger

08.45 h Greetings and Introduction – Hodler

Whole-Body MRI and Body Composition Profile

09.00 h Whole-Body (wb) MRI: Overview and Technical Developments – Boss

09.20 h wbMRI and Body Composition Profile: Why and How? – Guggenberger

09.40 h wbMRI and Artificial Intelligence for Volume Segmentation – Chaitanya

10.00 h wbMRI and Metabolic Syndrome/Diabetes – Machann

10.30 h Discussion

10.40 h Coffee break

Whole-Body MRI and Oncology

11.10 h wbMRI and DWI for Tissue Characterization – Rossi

11.30 h wbMRI and Multiple Myeloma: State of the Art – Messiou

12.00 h wbMRI vs. PET-CT in Oncology: Focus Prostate – Burger

12.30 h wbMRI in Children – Kellenberger

13.00 h Discussion

13.10 h Lunch Break

Whole-Body MRI and Inflammation

14.10 h wbMRI and Myopathies – Batlle

14.40 h wbMRI and Spondylarthropathies – Roszkopf

15.00 h wbMRI and Vasculitis – von Spiczack

15.20 h wbMRI and Neurography – Wurnig

15.40 h Discussion

16.00 h End

Kindly supported by

